

IRI · USA
Intelligence Research Institute

MIT CSN
NURTURING GROWTH. SHAPING THE FUTURE. SINCE 1975.

MIT · CSN EXECUTIVE WORKSHOP

**FUTURE OF APPLIED AI
AUTOMOTIVE &
MOBILITY DOMAIN**

AI IN *Motion*

**Institutionalizing Intelligence
Across the Automotive
Value Chain**



**Presented by Intelligence Research Institute
(IRI), USA**



**20th & 21st July 2026
10:00 AM – 4:00 PM**



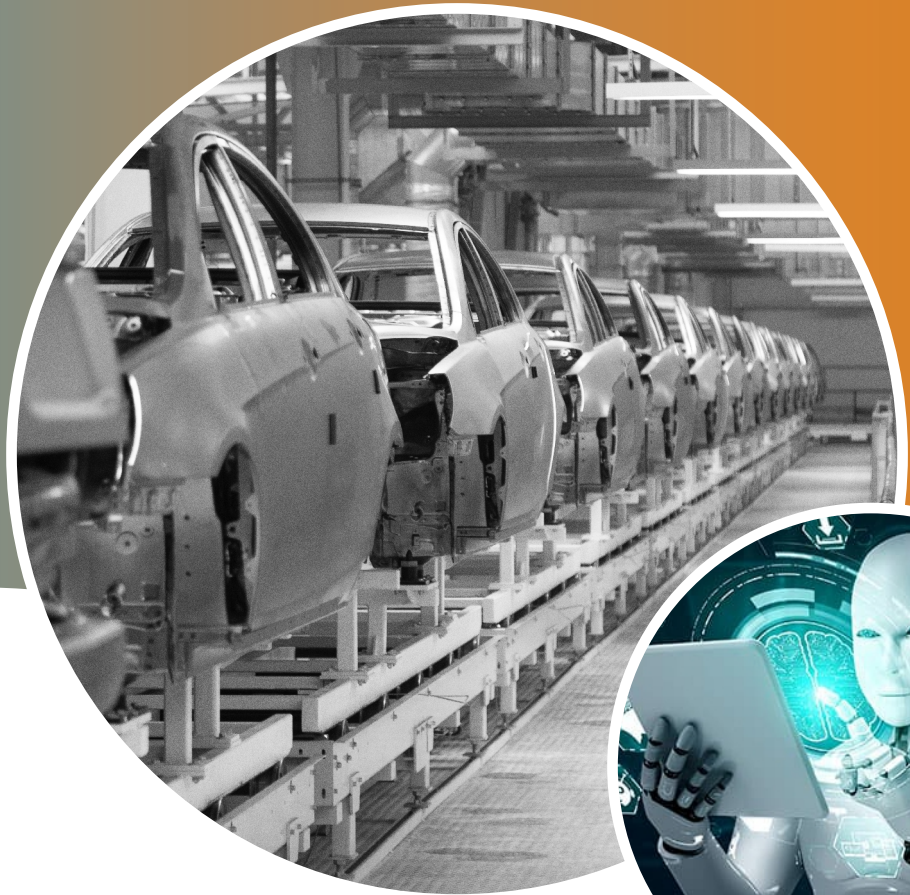
**Limited to
50 Participants**



**₹ 24,500
Including GST**



MIT-CSN Campus · Chhatrapati Sambhajnagar, Maharashtra, India



Strategic Context

The Strategic Inflection Point

Artificial Intelligence is no longer a digital initiative — it is becoming core enterprise infrastructure across automotive value chains. From product engineering to software-defined vehicles, AI is reshaping capital allocation, operating margins, speed-to-market, and enterprise valuation simultaneously.

The defining question for leadership teams is no longer whether to adopt AI — but how to institutionalize it responsibly, profitably, and at scale. Organizations that internalize AI capability today will define industry standards tomorrow.

Key Value Drivers

Six Dimensions of AI-Driven Value



Capital Allocation
AI reshaping investment models



Operating Margins
Structural cost compression



Speed-to-Market
AI-accelerated product cycles



Differentiation
Intelligence as value creation



Risk Governance
New AI compliance paradigms



Enterprise Value
AI as valuation multiplier

Workshop Design

Executive Focus Areas

ROI & COST ARCHITECTURE

Financial modeling of AI programs and board-level ROI frameworks

BUILD vs. PARTNER

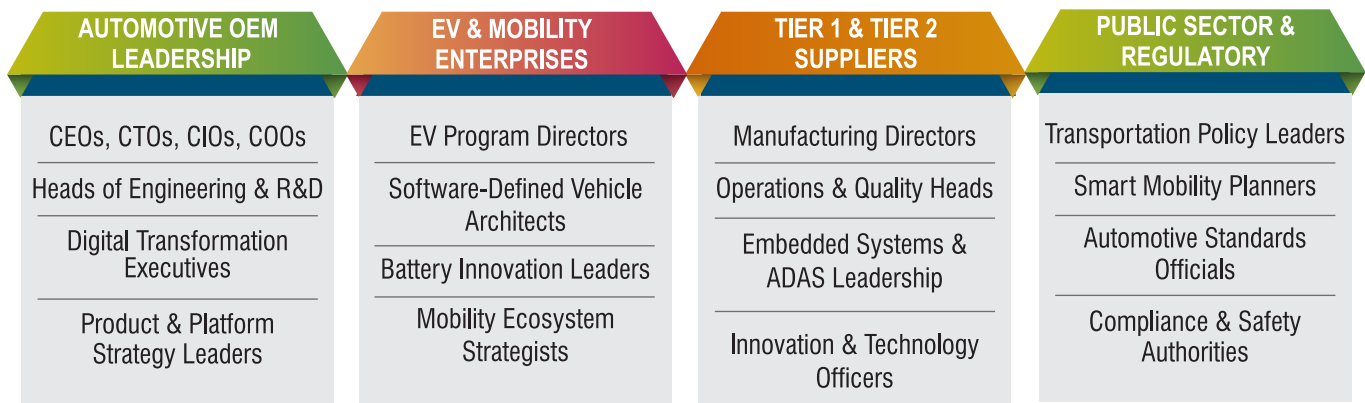
Strategic decisions on in-house, partnership, or platform AI adoption.

RISK & GOVERNANCE

AI compliance structures and risk oversight templates

Who Should Attend

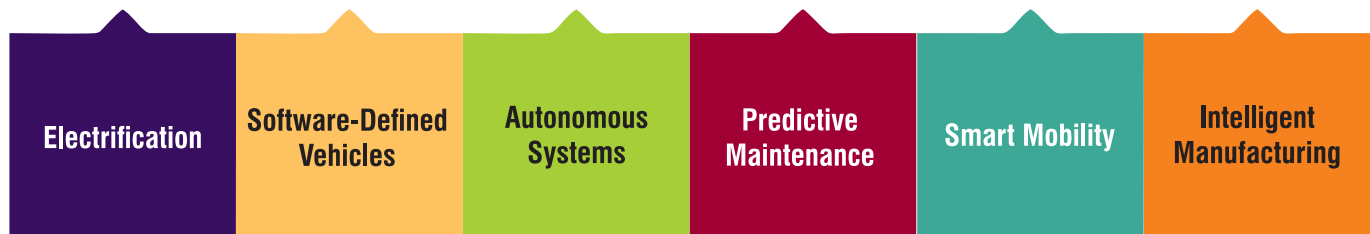
Designed for Industry Leaders



Industry Transformation

Automotive's Structural Transformation

Automotive is undergoing simultaneous structural transitions redefining competitive positioning. Global leaders such as Tesla, BMW, and General Motors embed AI as enterprise infrastructure — not isolated pilots. The transition spans six critical domains shaping the next decade



CENTRE OF EXCELLENCE A Permanent Commitment

IRI USA & MIT Group establish a Centre of Excellence in Applied AI - vendor-agnostic, with ongoing strategic support beyond the workshop.

- Vendor-agnostic strategic advisory
- Executive certification pathways
- AI governance research
- Enterprise capability development
- Industry-academia collaboration

LOGISTICS & REGISTRATION



20th - 21st July 2026



10:00AM - 4:00PM



Venue

MIT-CSN Campus, Chhatrapati Sambhajnagar, Maharashtra, India



Fees

₹ 24,500 (Including GST) per participant Group registrations available for 5+



Executive Networking Dinner — 20 July

About MIT

MIT CSN is an autonomous institution, offering UG, PG & PhD programs in Science, Engineering, Technology and Management. Nearly 10,000 students study on the 47-acre campus in Chhatrapati Sambhajnagar, Maharashtra, India. MIT CSN is managed by the G S Mandal Trust, which was founded in 1975 and runs 20 educational institutions as well as a 100-bed NABH accredited charitable hospital.

About IRI

The Intelligence Research Institute (IRI) in San Diego, California, USA, was established in 2019 as a non-profit research think tank to enhance worldwide education, training, and capacity building initiatives in security, technology, and intelligence.

Will your organisation institutionalize AI as competitive infrastructure?

AI capability is becoming a structural determinant of automotive competitiveness

<https://intelligenceresearch.institute/AutoAI/>

IRI USA +1-858-264-6431 | mail@intelligenceresearchinstitute.com | +91 77589 49978

MIT-CSN: aiworkshop@mit.asia | www.mit.asia